

# Hale O Lana'i

**(303) 681-6767**

1 Manele Road  
Lanai City, Hawaii 96763

**Price: \$3,995.00 - \$6,750.00**

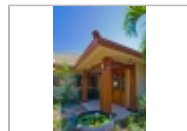
**Size:** 6000 SqFt

**4 Beds 4.5 Baths Villa**

**Vacation Theme:** Beach

**Deposit:** 50% deposit due upon reservation

**Sleeps:** 8



## Property Description

A Rejuvenating Natural Refuge

The unspoiled island of Lana'i is a few miles off the coast of Maui, yet worlds away from the commercial Hawaii most visitors experience. Aside from two unobtrusively elegant Four Season Resorts, the island is mostly untouched. Lana'i is a rejuvenating and romantic refuge with a dramatic and jagged coastline...truly enthralling topography. Cuvée's ultra-private Hale-O-Lana'i estate is arguably the finest on the island: Its Indonesian-inspired architecture and custom interior enhances views of the Pacific Ocean and Hulopo'e Bay (named America's most beautiful shore).

**LAYOUT:** 6,000 sq. ft of Indoor and Outdoor living space; Four ensuite bedrooms (Three King Suites and One Suite with Two Twin Beds or a King Bed).

**PRIVATE OUTDOOR TERRACES AND VIEWS:** The 1,000 sq. ft. outdoor living area embraces jaw-dropping 270-degree views of the jagged Lanai coastline and Pacific Ocean-with a stunning infinity pool and spa adorned with imported Italian mosaic tiles, and flawless spaces for lounging, dining and entertaining. The private outdoor spa features a steam room, outdoor shower, and cold splash plunge pool.

**INTERIOR/ART:** The Indonesian-inspired architecture is complimented with imported Mahogany accents, Antiques from Thailand and Japan, and of course, couture furnishings and luxurious custom bedding. The home features a state-of-the-art corner-less pocket door system: The walls of the home open wholly to the magnificent ocean views creating a magical open-air effect.

**AMENITIES:** Exploring Shipwreck Beach, hiking Keahiakawelo (Garden of the Gods), and golfing the island's two world-renowned courses is reason enough to spend a relaxing day at the Four Seasons Manele Bay, located a few minutes away via a short walk or golf cart ride, and offering a world-class spa, several restaurants, fitness facilities and luxurious pools. Guests also have full access to the Four Seasons Lodge at Koele.

**AWARDS:** The Lodge at Koele was ranked #6 in the "Best of Best - Top 100 Resorts in the World." The two resort golf courses are ranked #1 & #3 in the World by Condé Nast Traveler.

## Destination Escapes

Office Location

**(303) 681-6767**

